

# Lyvennet Red Squirrels

Summer 2022



Well Head, Crosby Ravensworth – Photo: Andrew Wallis

The main news being:

- Greys are a problem – they obviously have had a good breeding season and effectively are popping up just about anywhere at the moment.
- Jerry despatched many greys in Town Wood, Morland
- Reds are still numerous and active
- There has been one red with S/pox (Reagill)
- Pheasant rearing season as begun which now gives no access to a number of woods until 1<sup>st</sup> Feb'.



## General

**X33 Greys Despatched**

**Year Total = 40**

**x4 Three Cornered Wood**

**x24 Town Wood**

**x4 Greengill Farm, Morland**

**x1 found dead in the garden of 'Ridgeway', Maulds Meaburn**

**Reds with S/pox despatched this year in locality = 1**

**20<sup>th</sup> June at Reagill**

**Road Deaths – two      Year Total = 4**

**28<sup>th</sup> June @ Reagill**

**25<sup>th</sup> Aug'** - dead red at the junction of the Appleby to Orton road with Meaburn Edge this morning around 9.00. A lot of show traffic around at this time.

**Other Deaths – none      Year Total = 0**

## Report

It was obviously a good winter/spring for breeding as we are seeing a lot of greys about at present and some of the places that they are turning up, such as Dalebanks (Crosby Ravensworth) are places where they haven't previously been seen.

This has to be slightly tempered with the 'June Dispersal' (see below), but at the end of summer, greys are still in the woods around Flass (and coming to feeders at the house) and making appearances in Newby, Reagill and along Brackenslack Lane

As Jerry pointed out, some locations such as some of the woods around Reagill, haven't had a ranger for years and in some ways are a bit of a '*no man's land*' when it comes to monitoring them.

I genuinely think that come February 2023 when the rangers once again have access to the woods that are now out of bounds, that the situation will be worse than it was this year.

However, we need to state the good - reds remain plentiful and seemingly in good health ... but ...

Whilst it was just the one red, the 'scare', when a red with squirrel pox turned up in a garden in Reagill during June, acts as a reminder of the delicate balance that the presence of greys create.

And once greys are present, woods and elsewhere, if they are not swiftly dealt with then that balance tips further in the wrong direction.

But such as the 8<sup>th</sup> July when whilst doing my rounds I saw reds in three separate locations within a short space of time, then the work must continue.

At least this morning (13<sup>th</sup> Sept) when I bought more feed the price hadn't gone up!

Over the last few weeks I have put an extra, viewable, feeder up near Flass and I suspect that I might soon be doing the same in Reagill!

I attended the P&DRSG AGM over the summer at which Terry Abraham gave a talk and in which he gave some detail about his current project ... a film about reds.



It will be out next year, but his own website and Facebook page are a good read  
The Facebook page especially, which has some excellent film of a reds drey

<https://www.facebook.com/TerryAbraham.LakeDistrict/>

Finally – strawberries.

Who doesn't like them?

When you read below, somewhere you will find a mention of them

A couple of thanks:

To David Thompson for fixing a couple of old broken down feeders for me

To Vicky Welch for sending us some foreign currency which P&DRSG can put to good use.

Everyone who sent in photos, reports and sightings – I'm sure you will agree that the photos taken by Andrew Wallis are superb.

Jonathan Taylor for his prompt action with the red that had S/pox

Finally, just my usual plea to keep sightings coming in and to send me any photographs – any of reds that are not sat on feeders are especially welcomed.

Keep up the good work.



[www.penrithredsquirrels.org.uk/](http://www.penrithredsquirrels.org.uk/) [www.facebook.com/PDRSG01](https://www.facebook.com/PDRSG01)

Below is a chronology of **sightings of greys** over these last three months:

Also refer to the relevant section within the report for more details

**2<sup>nd</sup> JUNE**– Brackenslack Lane a.m. - on a wall near to entrance to Holesfoot

**10<sup>th</sup> JUNE** – **\*\*\*GREY DESPATCHED\*\*\***

A female in Three Cornered Wood

**10<sup>th</sup> JUNE** – **\*\*\*GREY DESPATCHED\*\*\***

A male in Three Cornered Wood

**15<sup>th</sup> JUNE** – **\*\*\*GREYS DESPATCHED\*\*\***

X2 males in Three Cornered Wood

**17<sup>th</sup> JUNE** – at least one grey remains in Three Cornered Wood/Orchard Wood

**19<sup>th</sup> JUNE** – possible sighting of a baby grey half way along Morland Bank wood

**20<sup>th</sup> JUNE** – grey in a garden at Newby

**21<sup>st</sup> JUNE** – **\*\*\*GREYS DESPATCHED\*\*\***

Since the beginning of the month – **X22** in Town Wood (Cross Rigg)

**24<sup>th</sup> JUNE** – Wyebourne Farm (Reagill) – running along a wall and going into a nearby plantation.

[Jerry] this is an area that has never had really good coverage by a ranger - I will contact Andy at Lowther and have a chat with him.

**End JUNE** - **\*\*\*X2 GREYS DESPATCHED\*\*\***

Since the beginning of the month – **X24** in Town Wood (Cross Rigg)

**28<sup>th</sup> June** - **\*\*\*X4 GREYS DESPATCHED\*\*\***

Morland (Greengill Farm) X1 female and x3 kits

**1<sup>st</sup> July** – Three Cornered Wood – still grey(s) in there.

Believe that now includes Kits

**Last week of July** – grey seen on **Brackenslack Lane**, near the stream

**15<sup>th</sup> Aug'** – **Dale Banks, Crosby Ravensworth** – grey on the feeder in garden.

**13<sup>th</sup> Aug'** – grey found dead in the garden of 'The Ridgeway' in Maulds Meaburn.

## Squirrel Dispersal

In the Reagill section you will read comments from Jerry about '*The June Dispersal*', Below are a few notes about it:

“Excluding during significant food shortages, squirrels aren’t migratory, but their movements and dispersal is closely linked with seed crop and, for males, the availability and distribution of sexually-active females. In her 1987 Whittet book, *Squirrels*, Jessica Holm noted how Red squirrels will make exploratory trips outside of their normal home range, particularly during poor seed years, but this is not dispersal as these trips are temporary.

Autumn is the peak season for dispersal in both species of squirrel, although this can vary according to how good the mast crop is.

Dispersal is the process by which animals move from one area and setup a home range somewhere else.

In *The Eurasian Red Squirrel*, Stefan Bosch and Peter Lurz note that, in stable habitats with a dependable food supply, dispersal is usually a juvenile phenomenon, with newly-independent animals leaving their mother’s home range to look for their own territory; but that adults will also disperse and compete with juveniles for new settlement areas in habitats that



experience large-scale fluctuations or cycles in tree seed crops, such as spruce plantations.

In one study, published in 1995, Luc Wauters and his colleagues found that, of 44 adult female Red squirrels living in a pine forest in Belgium, only seven (16%) moved from the territories on which they first settled.

Once established, females appear to stay on a territory for life, if conditions allow, and did not actively bequeath their territory to their offspring. Autumn is the peak season for Red squirrel dispersal although, during good mast years, spring-born kittens may disperse during the summer months.

As with Red squirrels, Greys also tend to disperse during the autumn, although spring-born kittens may disperse during summer and some populations show their peak dispersal during June.

Tracking studies have demonstrated that Grey dispersal is often preceded by a period of about three months during which the animals move over a larger area, suggesting food resources are low.

Between 1986 and 1990, John Koprowski trapped and uniquely marked 151 Grey squirrels, 80 males and 71 females, and followed their movements around the campus of the University of Kansas.

In a paper to the *Journal of Mammalogy* during 1996, Koprowski described how both sexes were more prone to dispersing than staying on their natal area, but females were more likely to hang around than males.

Of 43 females that Koprowski captured as juveniles, 16 (37%) remained on their natal range, while only two (6%) of the 34 males stayed and, in both cases, this was because their mothers died shortly after they were weaned.

Twelve of the 16 females that stayed on their natal range mated and eight produced at least one litter in the territory, suggesting that they were not simply delaying dispersal.

Koprowski was able to document 900 interactions between marked adult squirrels during his study and found that females remaining in their natal range appear to form kinship groups, because neighbouring animals are likely to be close relatives, that are more tolerant of each other than they are of strangers or distant relatives. As with most mammals, squirrels appear to undergo an “exploration phase” shortly prior to dispersal, at between two and six months old, during which they expand their home range area considerably as they look for other suitable locations. High densities of females in surrounding areas appears to impede settlement success of females from both species and the presence of Greys may reduce the settlement success of Reds.

The trigger for dispersal isn't well understood, but several observations related to me by members of the public who have been watching dreys in their gardens suggests that the female essentially just takes off one day when she's “had enough”, and this inspires the kittens to disperse soon afterwards.

The female may then return, a week or so later, to reclaim the drey.

These are, however, unsubstantiated observations and, to the best of my knowledge, this remains a poorly studied area of squirrel natural history in both species.

And if you want a ‘closer to home’ account follow the link

<https://cdn.forestresearch.gov.uk/2013/03/fcrn014.pdf>

## Maulds Meaburn



Three Cornered Wood, Maulds Meaburn Photo: Darren Rogers

### Lyvennet Bank

X1 feeder looking out over the green

X1 feeder on a tree in the main garden next to the river.

Feed goes constantly from both of the feeders – fairly good chance of spotting a red feeding.

At the start of the period all was well – both feeders being visited on a daily basis over the green

**15<sup>th</sup> June** – the ‘green’ feeder is now looking very poorly. Mice have chewed away at the front and now the grooves in which the Perspex screen fit have simply gone. That’s a lot of wood - will replace it at the weekend.

**13<sup>th</sup> June** – replaced the green feeder with a brand spanking new black one and put a hazelnut in for the first arrival.

**20<sup>th</sup> June** – 0820h red on the green feeder and whilst the monkey nuts had gone the hazelnut was still there!

**1<sup>st</sup> July** – topped the feeders up this afternoon and a red on the green feeder when I returned from my rounds

**End of period** – position remains the same, all good and no issues



# Flass



Feed goes constantly from the (now) four feeders – all being very popular.

At the start of the period all was well with daily visits from reds and no greys had been seen on any of the feeders for some time.

**Garden** - on a yew tree to the left of the swimming pool – not viewable to public.

**Pump House** – (was previously the ‘Tunnel Feeder’)

on a tree, just on the high ground immediately next to the building

Go through the tunnel into the field and immediately look right

**Folly** – up at the folly and not viewable to the public

**The Avenue** – on a tree, just on the high ground immediately next to it

Go through the tunnel into the field and immediately look left

## JUNE

**17<sup>th</sup>** – last couple of days the garden and pump house feeders haven’t been touched

**20<sup>th</sup>** – garden feeder still hasn’t been touched and today neither has the pump house

## JULY

8<sup>th</sup> – Red popped out of the FOLLY feeder as I approached it

## AUG

19<sup>th</sup> – new feeder with camera put up today (due to no longer being able to get into the woods due to pheasants).

As you walk out of the tunnel into the field it is on a tree up the bank on the left.

Camera also put up on the pump house feeder.

How long will it be before a grey rears its ugly head?

20<sup>th</sup> – I had also put a camera up at The Folly – a red with a very dark tail:



Pump House – topped the feeder up and when I got back from Crosby Ravensworth, a red was on the feeder (1710h).

23<sup>rd</sup> – grey briefly up at the folly at 1044h



24<sup>th</sup> – nothing as yet as gone onto the new feeder, but very bad, if not unexpected news ...



Gary informed

27<sup>th</sup> – grey has been at the Pump House the last two days and seen nearby early today – had a short while here this morning ad didn't show.

**End of period** – the grey continues to pop up at the PH

Key to map below:

F – Flass

1 – Orchard Wood

2 - Three Cornered Wood

3 – Longhill Wood

4 – Ewe Close



## Three Cornered Wood



**In many ways this photo sums up the position in this wood**

### **JUNE**

At the beginning of the period – we knew from both the camera and my own sightings that there was at least one grey in the wood and probably more, especially with the amount of feed that is going.

Whilst greys are dominant, certainly in terms of who spends the most time on the feeders, reds do visit the feeder, but there are visits are sporadic and not for very long.

Unless they arrive shortly after I have been and topped the feeder up, there is little left for them anyway .

**10<sup>th</sup> – \*\*GREY DESPACHED\*\*** - x1 adult female - 1940 hrs

**11<sup>th</sup> – \*\*GREY DESPACHED\*\*** - x1 adult male - 1620 hrs

Shortly after another grey was seen, but this did not go to the feeder.

However, about 20 mins after I left it had the rest of the evening chomping away!

**12<sup>th</sup>** – reds and greys for most of the day.

**13<sup>th</sup>** – GREY all day – from 0855 hrs to 1945 hrs – unfortunately I was at work  
Red has made the occasional appearance

**14<sup>th</sup>** – a.m. – no food in the feeder

Reds and greys throughout the day – after I topped up just before 09h

**15<sup>th</sup>** – **\*\*X2 GREYS DESPATCHED\*\*** - x2 adult males - 0730 hrs

Gary was here early this morning and got them down in the bottom corner

And how many are left?

GREY on the feeder at 1030h!!!!!!!!!!!!

Reds and grey(s) all day

**16<sup>th</sup>** – RED on the feeder this morning when I attended

It was only there for the morning and then no more for the rest of the day – but no greys.

The red has a very blonde tail (BT)

**17<sup>th</sup>** – Gary was here early this morning and only saw the BT red

However, whilst the red was here ridiculously early (0420h), there had been a grey from 0645-0710h!

At 09h the BT red was back on the feeder just for 20 mins – but then a grey was back at tea-time, but in spite of there being plenty of food left, only for 30 mins

**18<sup>th</sup>** – reds early this a.m. and stayed until 0920h



Had a hour here tonight, but nothing turned up at all and whilst I didn't change the card in the camera I could see that there was still food in the feeder!

Turns out there has been NO greys today.

**19<sup>th</sup>** – up to 15h NO greys today and still some feed in the feeder!

But it turned up between 1615-1625h

**20<sup>th</sup>** – brief visits from a grey (0613-30h + 1315-20h) otherwise it's all red  
Had a little time here at tea-time, but just saw x1 red and left at 1740h  
And of course a grey then turned up at 1820h for 10 mins!

**21<sup>st</sup>** – mainly reds today, but the grey puts in the odd, brief(ish) visit (0640 - 07h + 1015-1115h).

**28<sup>th</sup>** – due to my rubbish shift pattern it has been six days away – in that time:

Definitely x1 red **young** visiting the feeder

Predominantly reds visiting the feeder

Grey(s) still there, although went missing on 22<sup>nd</sup> through to very late on the 25<sup>th</sup>.

Where had it been? Longhill Wood on each of those days!

Grey then back every day of 26-27<sup>th</sup> and was also here first thing this morning and returned in the eve'.

**29<sup>th</sup>** – only reds so far this morning.

## JULY

**1<sup>st</sup>** – over the last few days it has been a mix of red and grey, becoming more grey 30<sup>th</sup> and 1<sup>st</sup> and it also looks like it could be more than one grey as one looks like a kit -- Hopefully Gary is here in the morning.

With a good supply of food here though no greys have been picked up on the cameras in the adjacent woods!!

**3<sup>rd</sup>** – position remains the same, but more of the reds (Inc' x1 kit) as well.  
Spent a hour here in the eve' and nothing showed up.

**4<sup>th</sup>** – well, would you credit it! So far this morning (up to 0850h) only the red kit and no greys – glad that Gary hasn't been here yet today!  
But it did come back at 0940-0950h and 1410-1420h.

**8<sup>th</sup>** – over the last few days has been both reds and greys, probably in equal measure – still think that it could be more than one grey.

**11<sup>th</sup>** – still x2 reds (inc the male kit – one camera angle of it going into the feeder showed me what sex it was!! I thought it best not to share the image!)  
but still the grey(s) - I still suspect at least x2 one of which is a kit

**18<sup>th</sup>** – because of my shift pattern, I've not been in the woods for about 6 days -  
the position remains the same with grey(s) prominent in this wood.

Not unsurprisingly, late in this period they have also popped up in the other woods nearby – food as ran out here so go looking for it.

They've even popped into Ewe Close which isn't good.

Grey was back for a while from 1753 – 1815hrs. I then had a hour here from 19h and nothing turned up.

**19<sup>th</sup>** – very little today, just a grey briefly at 0630h – hasn't it been warm!

Had a hour here from 1645h – nothing turned up and there was still some food left in the feeder – too hot!

\*\*when I checked the camera on the 20<sup>th</sup> – the grey turned up at 1935-50h!!!

See Orchard Wood for what happened as I walked back

**20<sup>th</sup>** – Gary here before 8 this morning, the grey had been and gone 0615-0650h!!

X2 reds spent some time here this morning

I then had a hour here from 19h and nothing – this grey needs despatching!

I amend the time that I go to match when it was last there and it amends the time that it goes to make sure that it misses me – it's got to go.

## **AUGUST**

**2<sup>nd</sup>** – I've been away on holiday for 10 days and on my return – unlike the other woods where not too much has happened, here in this, small, wood is where it happens!!

Obviously the food that was put out before I went away has all gone, but in spite of this there are still regular and daily visits.

For some curious reason the grey(s) are only visiting in a morning (but turning up on camera elsewhere?) and the reds are still here and (at present) look healthy.

Gave it a hour here tonight (6-7) but nothing showed up

**3<sup>rd</sup>** – had a hour here this morn' (0750-0855) and nothing showed.

The grey had been here from 0650-0715h!

Visits from red and grey during the day

**18<sup>th</sup>** – and so that is it until 1.2.2023.

Pheasants arrived early August and I've had my e-mail to keep out of the woods, but because of both being away and work I hadn't been able to get down until today – camera removed and the feeder emptied, cleaned and disinfected.

The camera showed that reds and a grey(s?) are still visiting, but the last time that a grey was here was on the 15<sup>th</sup>.



## Orchard Wood

### JUNE

At the beginning of the period – a grey(s) make the occasional appearance but there are at least x2 REDS and possibly more and which make regular visits to the feeders – the ‘new’ second feeder (F2) that was put up in January is visited more sporadically

**10<sup>th</sup> - 11<sup>th</sup>** – Grey in the eve

**12<sup>th</sup>** – grey from 0755-1010h

**15<sup>th</sup>** – only reds – and Gary was here and saw x2 reds having a good ‘ding-dong’ and then possibly another two reds further (may have seen the same one twice).

**16<sup>th</sup>** – grey 0630-07h – reds rest of the day – camera on F2

**17<sup>th</sup>** – just reds today – but a bit of first at night, the red was there at 2154-22h, now that is the latest that I have known.

**18<sup>th</sup>** – **grey** on main feeder for a while this morning from 06h and back just after 15h for 20 mins.

Red had a look at F2 but only briefly otherwise fairly regular visits to F1

**19<sup>th</sup>** – **NO grey** (up to 15h)

**20<sup>th</sup>** – **No grey** again (it’s in Three Cornered Wood) had a little time here at tea-time and it didn’t show – saw x2 reds

**21<sup>st</sup>** – ‘just’ reds.

I think the reason why I am getting so few photos at F2 is that to get any food out of the feeder any squirrel has to go fully inside in – and once in it probably just stays there until it has had enough – no movement, no photo!

**28<sup>th</sup>** – due to my rubbish shift pattern it has been six days away – in that time:

Only two visits from a grey, 22<sup>nd</sup> and 25<sup>th</sup> – doing the rounds of the woods looking for food. Otherwise predominantly reds visiting the feeder.

Red was on the feeder this morning 5 minutes after I had gone!

## JULY

**1<sup>st</sup>** – all red over the last few days with the greys staying in Three Cornered Wood.

**3<sup>rd</sup>** – just reds and no greys

When they approach the feeder they tend to go along the branch that is behind the tree, go to the very end and then 'launch' themselves to jump over to the feeder!



**4<sup>th</sup>** – even though I topped the feeder up late last night, the food was gone and still only reds visiting  
F2 also empty.

**8<sup>th</sup>** – red on the feeder when I attended this afternoon and from the camera it is still only reds that visit.

**10<sup>th</sup>** – grey visited tonight.

**11-12<sup>th</sup>** – just a few visits from reds

**18<sup>th</sup>** – because of my shift pattern, I've not been in the woods for about 6 days - the position remains the same here though with reds prominent.  
However, and not unsurprisingly, late in this period (18<sup>th</sup>) a grey have popped up here - food as run out in Three Cornered Wood and so they/it go looking for it elsewhere.

They've even popped into Ewe Close which isn't good.

19<sup>th</sup> – after a fruitless hour in Three Cornered Wood as I was walking back through here saw a red jump out of the undergrowth about 20 yards away from the feeder. I then realised that there was also another red actually on the feeder.

This was a small kit and it didn't move – even when I was stood no more than 2 yards away.

It did eventually move off, but was it small – it almost looked as though it was asleep, but looked healthy, just in a stupor – it has been very hot



Has been more movement (only reds) in this wood than Three Cornered Wood though.

## AUGUST

2<sup>nd</sup> – I've been away on holiday for 10 days and on my return not a lot to report Here.

Visits from reds haven't been that frequent and on the 26<sup>th</sup> and the 1<sup>st</sup> (Aug) there was a visit from a greys, no doubt the Three Cornered Wood grey out looking for food.

18<sup>th</sup> – and so that is it until 1.2.2023.

Pheasants have arrived and I'm to keep out of the woods, but because of both being away and work I hadn't been able to get down until today – camera removed and the feeder emptied, cleaned and disinfected.

The camera showed reds are visiting regularly, but a grey popped up on the 15<sup>th</sup>.

# Longhill Wood

## JUNE

This wood is the main one used for pheasant rearing – there is a ravine that runs through it with the main pheasant pens on the hill to one side. The X2 feeders are on the other side of this ravine and about 125 yards apart.

The original feeder (F1) is lower down

and used to get hammered, but since February when I put up the second feeder (F2), less so and now that new feeder gets more visits.

However, I've never known a feeder have so many birds visit a feeder and they are a right nuisance.

**It is mainly reds, two at least, but I can't be certain and whilst greys don't appear to be resident, they do make occasional appearances.**

8<sup>th</sup> – only reds so far this month. Food goes quickly, but birds on F2 a problem

9<sup>th</sup> – grey today for 30 mins at tea-time for 10mins. (F2)

13<sup>th</sup> – grey again for 20 mins from 0640h (F2)

14<sup>th</sup> – grey very briefly at 07h (F2)

16/17<sup>th</sup> – occasional visits from a grey – but woodpeckers

Out of 800 photos, about 25 were of squirrels, 100 of mice in the night and the rest were of woodpeckers looking into the feeder. They are not very clever! Camera moved from here down to the original one.



19<sup>th</sup> – just a few visits to F1 by a red and still a little food left in F2

21<sup>st</sup> – having moved the camera to F1 I now only get 47 photos instead of 847, none of mice and only two of birds!

Anyway, only red(s) on F1, still with a little feed left and the same up at F2.

I like these photos:



It's been a long time since I have seen x2 reds at the same time in this wood.

**28<sup>th</sup>** – due to my rubbish shift pattern it has been six days away – in that time:

A grey(s) was on F1 on each of 22<sup>nd</sup> to the 25<sup>th</sup> – but has not visited since.

On those days the grey in Three Cornered Wood hadn't been seen – any chance that we are down to the last one?

In the picture below the red held its ground for a while before the grey won out.



## JULY

**1<sup>st</sup>** – all red over the last few days, with two caught on camera at the same time – looks like the greys are just staying in Three Cornered Wood.

**4<sup>th</sup>** – x2 reds this morning as I walked into F1. They were crossing the stream (to the right of the photos) making their way to the feeder.

**8<sup>th</sup>** – over the last few days has only been reds – red popped out of the undergrowth and went up a nearby tree when I went into the wood this afternoon.

**18<sup>th</sup>** – because of my shift pattern, I've not been in the woods for about 6 days - the position remains the same with reds prominent in this wood. However, and not unsurprisingly, yesterday a grey popped up here. Food has run out in Three Cornered Wood so they/it have gone looking for it. They've even popped into Ewe Close which isn't good.

**20<sup>th</sup>** – over the last few days only x2 visits by a red to F1. Food gone from F2 but I think that mice are a big problem on that one so will now move the feeder.

## **AUGUST**

**2<sup>nd</sup>** – I've been away on holiday for 10 days and on my return not a lot to report here, but most importantly, no greys. A few visits from red(s) to **F1** but it took them a good few days to get through the food that was left for them.

**18<sup>th</sup>** – and so that is it until 1.2.2023.

Pheasants arrived early August and I've had my e-mail to keep out of the woods, but because of both being away and work I hadn't been able to get down until today – camera removed and the feeder emptied, cleaned and disinfected. The camera showed that reds and a grey (4-5<sup>th</sup>) had been visiting, but the 5<sup>th</sup> is the last time that a grey was here and with only a bit of corn left in the feeder, a red hasn't been since the 12<sup>th</sup>.

## Edge Close - Wood above Flass Pasture NY 632 146



### **JUNE**

A curious wood in the sense that in spite of its proximity to other woods that do have greys, I've not yet seen one in here – not that I'm complaining.

It's slightly less dense than other woods and has a wall running through the centre which the reds tend to use has their 'way in' and the feeder is ½ way in and along that wall.

**16<sup>th</sup>** – feed going regularly

**19<sup>th</sup>** – as I was walking towards the wood from Longhill Wood saw a red in the corner where I get into the wood. It then ran up a tree.

Was it going to/from Longhill Wood?

Anyway, no Perspex screen in the feeder and just like the 'Green feeder' down at Lyvennet Bank, rodents have completely chewed away the front part of the feeder – temporarily fixed, but will need a new feeder, of which I have now run out.

**28<sup>th</sup>** – feeder replaced with a 're-conditioned' one



## JULY

1<sup>st</sup> – red jumped out of the undergrowth and ran up a tree as I approached the Feeder -- Camera sited here.

4<sup>th</sup> – the new reconditioned feeder looks good (thanks Dave) and even better is that there are no greys and ...



8<sup>th</sup> – position remains the same.

18<sup>th</sup> – because of my shift pattern, I've not been in the woods for about 6 days - And whilst the position remains the same with reds prominent, I'm a little perturbed by the fact that a grey turned up on the 17<sup>th</sup>.

I'm working on the theory that with me having not having put any feed out, especially in Three Cornered Wood that they/it have gone looking for it.

20<sup>th</sup> – in the warm weather not too much food has gone.

## AUG'

2<sup>nd</sup> – I've been away on holiday for 10 days and on my return not a lot to report here, but most importantly, no greys.

A few visits from red(s) and the food was all gone.

18<sup>th</sup> – and so that is it until 1.2.2023. as Three Cornered Wood and Orchard Wood. Camera removed and the feeder emptied, cleaned and disinfected.

The camera showed that it has only been reds visiting.

## GREEN ENDS + THWAITES COTTAGES

**June**

**10<sup>th</sup>** - I've seen a little red with a creamy coloured tail dance along the riverbank from Flass to us at Green Ends three times this week; Tuesday 7<sup>th</sup>, Thursday 9<sup>th</sup> and today Friday 10<sup>th</sup>.

If it's the same one he loves the same route; the riverbank, a dash across our garden, usually too fast to photograph as all I get is a blur of fur, and a zip up one of our apple trees where he disappears into the canopy before coming down our large cedar.

Every day he's had a large nut or a mixture of food and leaves in his mouth and even a twig.

On Thursday he was seen scabbling amongst the plants at the end of the garden for quite some time . . . maybe this is to become one of his new winter stores!

I did just manage to capture a photo of him twice, but nothing exciting!

All the best, Pennie



13<sup>th</sup> - A red in the garden again today -- Pennie



**16<sup>th</sup> July** - Saw a red skimming its way towards Flass as per usual from our garden.  
He appeared to be the same little chap or chapess(!) I've seen before.  
Pennie

**29<sup>th</sup> July** - Another brief squirrel report but not much to tell.

I espied our usual little fella do his Flass to Green Ends run along the riverbank yesterday about 8.30 in the morning.

This time his journey was interrupted when a couple of crows flew down towards him forcing him to backtrack a little and take cover under a bush.

When he made it to our garden and his favourite tree the two crows flew down at him again and he had to dash and hide amongst the branches.

Do crows often do this with squirrels, I've not seen it before?

**ED:** my understanding is that crows will do this when they think that the other 'animal' is a potential competitor for food.

Certainly when crows are in the vicinity of a feeder and being active, I don't see a squirrel (of any colour) taking a chance and they move off until the crows give up.

**31<sup>st</sup> July** - the same squirrel doing the same run again . . . a creature of habit me thinks! They really are cute little things; so pretty.

## **ROWANS**

**27<sup>th</sup> June** – Red feeding this morning.

**16<sup>th</sup> July** - had a visit from a young red this morning, first for weeks.

**28<sup>th</sup> July** - Red in our garden again today

## **Other sightings from the village:**

**JUNE -- No Reports**

## **JULY**

19<sup>th</sup> – **Far Lankabar** - a red squirrel visited me this morning at 7.30am.

Have put food & water out for my little hedgehog during the week, so maybe the squirrel can share this! Hilary.

## **AUGUST**

13<sup>th</sup> Aug' – **Dead GREY** - found dead in the garden of 'The Ridgeway'.

### **Brackenslack Wood**

#### **JULY**

3<sup>rd</sup> – I just didn't get up here in June and today I found that the few monkey nuts that I had put in had gone – topped up.

6<sup>th</sup> – still the monkey nuts are there

Position remains the same at the end of the period

### **Brackenslack Lane**

the feeder here remains un-visited and is to be removed

last week of July a grey was seen near here



## Trainlands Wood

This is the wood at the point where 'Little Beck' rises.

From MM – when you go past the entrance to Holesfoot and go down into the dip, the wood is on the left.

Feeder is on the R/hand side of beck, 50 yards in.

I top the feeder up every 2<sup>nd</sup>/3<sup>rd</sup> day and the food is always gone

### **JUNE**

2<sup>nd</sup> – a grey was seen in the adjacent field between here and Holesfoot.

A camera was brought back to monitor

10<sup>th</sup> – went to top the feeder up and as I came back to the road a red was running about around my car!

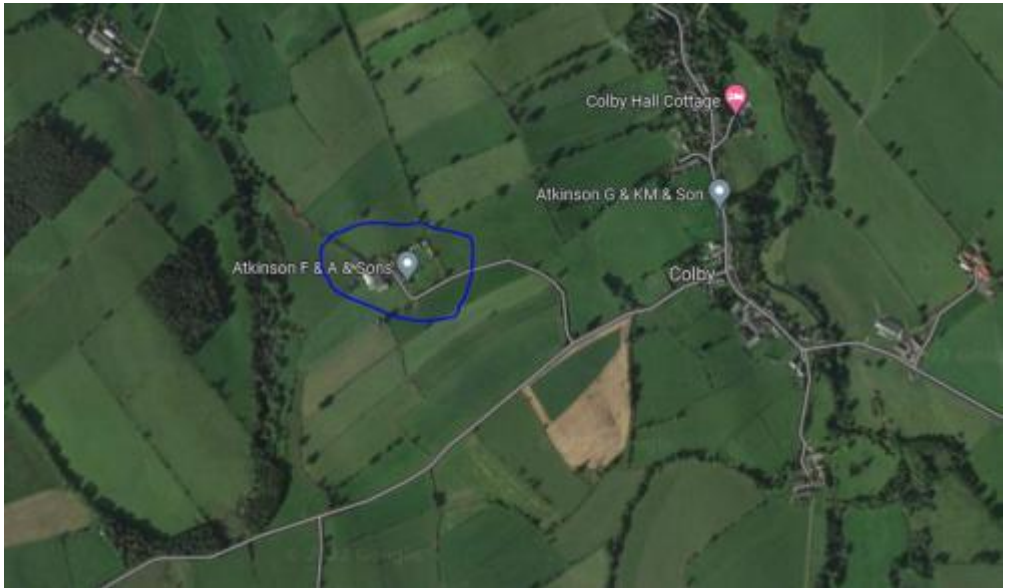


Spot squirrel No.2

16<sup>th</sup> – just reds – camera removed

End of period – generally remains the same, but with the odd sighting of a grey nearby

## Colby/Hawkrigg



I include this here as it isn't that far from the end of Brackenslack Lane.

Gary tells me that at Hawkrigg (in the blue circle) that he had been seeing a lot of greys, which he has dispatched – and that a red has returned to the feeder.

**29<sup>th</sup> June** – Gary tells me that over the last month he has dispatched **X17 Greys** here – in the strip of wood towards the bottom left of photo above.

**ED:** I've not added these 17 to our total.

## Morland Bank Wood

**19<sup>th</sup> June** – possible sighting of a baby grey half way along the road.  
Jerry informed

## Crosby Ravensworth



Nest Making (towards Oddendale) -- Photo by David Thompson

Unfortunately over the summer I don't get too much time to get down to Crosby Ravensworth to check the feeders along the river as I tend to be in the woods around Maulds Meaburn, but the reds seem to have returned in abundance to the village.

### Well Head + Anna Well

**11<sup>th</sup> June** – We have a couple of squirrels feeding daily at **Well Head (WH)**, both on the feeder and the bird table. Andrew





**21<sup>st</sup> June – WH** - Two red squirrels raiding our bird feeders this morning!

**23<sup>rd</sup> June – WH** - Three seen at our feeders this morning.

**28<sup>th</sup> June – Anna Well (AW)** - Not much to report of late, except for the last three days when one sighting per day at an earlier time, e.g. 7.15am to 7.30 am.

Am I to presume they are getting up earlier?

Anyway, one brief but special sighting on Saturday when, looking out on our front garden I saw a RS take and consume a wild strawberry from a patch near the front of the border – I didn't know they ate strawberries, did my eyes deceive me?

**ED:** yes they are up early at present (often on feeders before 5 a.m. – they go with the clock. Come winter they won't be arriving until after 0730h)

And no, your eyes did not deceive you – who doesn't like strawberries? And don't forget that Wimbledon has just started!



**5<sup>th</sup> July – AW** three sightings and all in our garden.

It seems that they really like the new peanuts I have put in our two feeders and we were treated to a wonderful gymnastics display.

Not seen any today, YET -- Dorothy

**12<sup>th</sup> July – WH – X3** reds on the feeder today



**13<sup>th</sup> July – WH** - Four reds seen simultaneously this morning in the garden.

**14<sup>th</sup> July – AW** - Red on the fence, Red on the ground, Red on the wall – so many at the moment that I don't know where to look.

They are just lovely – entertaining and beautiful too. How lucky am I? Dorothy



**Well Head, Crosby Ravensworth – Photo Andrew Wallis**



**Well Head, Crosby Ravensworth – Photo Andrew Wallis**

## Crosby Ravensworth South – Gilt

**11<sup>th</sup> July** – visited today and the feeder was empty – topped up.

**20<sup>th</sup> Aug** – feeder empty, topped up.

## Summer House

**11<sup>th</sup> July** – visited today and all the feeder was empty – topped up.

**23<sup>rd</sup> July** – empty and topped up.

**20<sup>th</sup> Aug** – feeder empty, topped up.

## The Bank Coppice (by River)

**11<sup>th</sup> July** – visited today and all the feeder was empty – topped up.

**20<sup>th</sup> Aug** – feeder empty, topped up.

## Other Sightings:-

### **JUNE**

**21<sup>st</sup> June – Dalefoot**

We had a red in the garden this morning. It appeared to have the left ear missing and it was carrying it's left leg.

We'll keep a lookout for it -- Joan

**22<sup>nd</sup> June – Harberwain** - Saw a wee, healthy red hopping down the road downhill of Haberwain Cottage yesterday.

It scampered up the dry stone wall on the south side -- AlexB

### **JULY -- No Reports**

## **AUGUST --**

### **15<sup>th</sup> – Dalebanks – GREY.**

Early a.m. - It came to the feeder in my garden.

Makes me wonder if he has been here a few days as haven't seen the reds for a few days now - Andrea

Gary informed

**16<sup>th</sup> – Dalebanks** - The reds are back in the garden today, I'm working from home most days so will keep more of an eye out for the grey, the air rifle is by the door just in case, now all I need to do is refresh my shooting skills!!

If the grey is seen again Gary will take a trap up.

## **Hopper Hill / Wood**

**X2 feeders here – both are on the opposite side of the river to the footpath along the river, but quite visible.**

- 1.) Feeder 1 is just in the copse further along from the bend in the river. Look for the white bag on the fence**
- 2.) Feeder on a lone tree standing just outside the copse on the bend of the river**

At the start of the period I had stopped feeding here as nothing had been to the feeders for over a month - the intention being to resume at the back end of the summer.

**19<sup>th</sup> Aug** – popped a few monkey nuts into both feeders.

**Monkey nuts still there at the end of the month**

## Oddendale

**24<sup>th</sup> June** - Hi Darren

I've been worrying about the reds at Oddendale. I've only ever seen healthy reds there but I'm only there every 3-4 days so I don't have a reliable picture of what's happening apart from how well the food's going.

I've bought a camera to put up, but would appreciate some help setting it up - I did put one up last year but results weren't good - I got a load of pics with only one having anything at all on or near a feeder and I'm thinking someone else would do a better job !

I also have just had a report from someone in Shap tonight who's seen a grey today running along a wall & into the plantation just east of Wyebourne farm where I believe Lowther has a couple of pheasant feeders too. Can you pass it on, I've lost touch with who the ranger currently is.

Any help much appreciated! Liz

**ED:** e-mail to Gary+Jerry and will arrange to meet Liz at Oddendale and put some cameras up.

**28<sup>th</sup> June** – met up with Liz today and put up x3 cameras on the x4 feeders that she has in there.

She had last 'fed them' on the 25<sup>th</sup> and the food was all gone this a.m.



Reds were on the feeder from lunch-time and were there on and off for the rest of the day.

More often than not, x2 reds, and x3 reds in one photo (immediately below)

The third one is in the feeder and all that you can see is its tail.



ED: but sometimes we make mistakes, turned out that I'd forgotten to turn one of the cameras back on after putting it up!

**12<sup>th</sup> July** – one of the 'dangers' of Oddendale!





But I've now told Liz that I need a photo of a red on the back of a cow!



29<sup>th</sup> July – no greys and it can get quite busy at times:



## Morland

**21<sup>st</sup> June** - Update from Jerry

“I have dispatched **21 greys** in Town Wood (Cross Rigg) in the last 3 week , mix of adults and young, plus side I have seen lots of reds and kittens”

**22<sup>nd</sup> June** – another grey dispatched out of Town Wood

**29th June** – update from Jerry (**inc' x6 GREYS DISPATCHED**)

X2 Greys dispatched in Town Wood -- then nothing for two days on feeder apart from loads of reds kittens as well

Then this morning see photo attached (Bottom of page) -- So back again.

Also Dispatched a female and 3 kits at Greengill farm, Morland yesterday



**Reagill**



**Photo – Jackie Ashton-Taylor**

**11<sup>th</sup> June – Dunkirk**

Hi Darren, here's a few pics of squirrels here in last few weeks- not great pics, but at least they're here and looking good -- Jackie



## 20<sup>th</sup> June – Dunkirk

Hi Darren, I've just seen a sickly confused looking squirrel on the patio. Jon went out to check and got close enough to see lesions around its eyes. It just stayed put and Jon had time to dispatch it.

On looking closer it had lots of sores and was a very poorly young squirrel, definitely **squirrel pox**.

We will incinerate the body to prevent any risk of transmission.

We'll remove our squirrel feeders and disinfect around the area.

We will keep a close watch on our other squirrels- unfortunately we've had good numbers recently, so this may already have spread.

We don't need any help from Gary or Jerry, I think they're probably busy enough.

We'll do what needs doing here.

Just wanted to let you know for your records and so you can let others know in case they need to watch their squirrels.

Very sad, it's our first experience of pox here in 16 years.

Just hope we can get on top of it quickly -- Jackie

### **ED: e-mail sent out to all re this and Jerry notified, who replied:**

"Not good news. I'm afraid pox seems to be doing the rounds again in places.

At least they are removing feeders and disinfecting area. I would encourage others to do same in the area.

Had a report of a grey in someone's garden in Newby yesterday, I have emailed them back to ask them to contact me if they see it again which I don't think will be the case as they are moving about a bit, it's the June dispersal.

I have shot 21 greys in Town Wood (Cross Rigg) in the last 3 weeks, mix of adults and young, plus side I have seen lots of reds and kittens"

Cheers Jerry

And

"If Jacqui keeps an eye out that's all can do and keeps in touch if anymore or how doing?

And whilst she has said she doesn't need any help at present, from me or Gary (and indeed we are busy and flat out) we would always try and help if can.

There has got to be some greys in and around that area somewhere. Always been suspicious of them woods and how not much seems to show there grey wise but they have got to be about somewhere?

Oh for more time in the day or more rangers etc etc etc"

**22<sup>nd</sup> June**

**Beech Tree Farm** - seeing at least 2 reds daily here.

Having problems with woodpeckers destroying the squirrel feeders!!

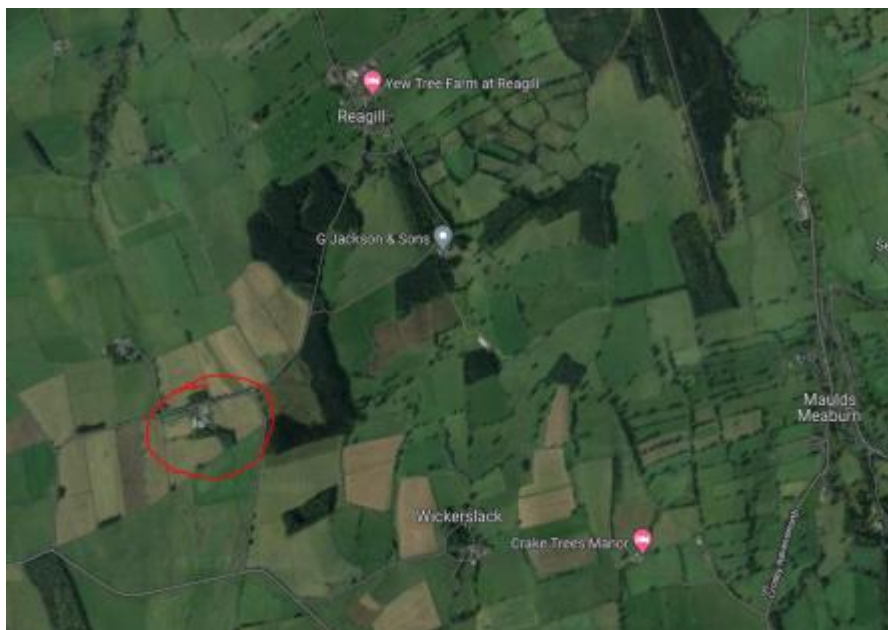
**ED:** woodpeckers!

As in the spring edition – are they stupid or just super-determined?

**Dunkirk** - We've seen squirrels in the garden today, they look healthy and active with no signs of lesions - but can only see from a distance. So we're just hoping and praying for no more sick squirrels, even though I know it's very possible. We'll keep a very close eye on them -- Jacqui

**24<sup>th</sup> June – Wyebourne Farm** - Sighting of a grey.

Running along a wall and going into a nearby plantation



Reply from Jerry - Thought maybe that sort of area, this is an area that has never had really good coverage by a ranger.

I will contact Andy at Lowther and have a chat with him

**28<sup>th</sup> June – Dunkirk** - Good news - we've had 5 different squirrels visiting today – all healthy looking, fingers crossed stays like that.

Bad news - neighbour found injured squirrel by road in village - Jon checked it, had died but was no signs of pox or any other obvious injuries, so fairly sure it was a road accident.

Sad to lose another one in the village this week, but one small positive was able to look closely and no pox signs -- Jackie

**23<sup>rd</sup> July** – update on S/pox - healthy squirrels still visiting, so far so good.

## **Kings Meaburn / Littlebeck + Sleagill + Newby**

### **NEWBY**

**20<sup>th</sup> June** - report of a grey in someone's garden in Newby

### **SLEAGILL**

**30<sup>th</sup> June** – red seen on a wall on the top side of the village

## And Finally

A little selection of some ad-hoc photos that I have captured



I'm desperate to get one of an owl with a mice in its talons.





My first bat ...



Darren Rogers 13<sup>th</sup> September 2022